

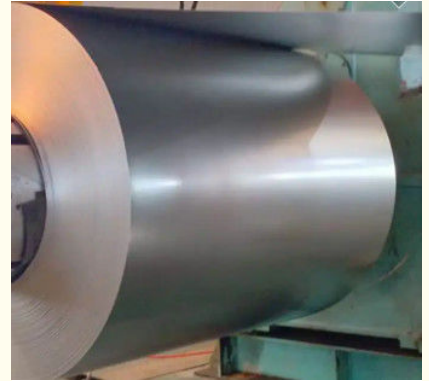


1/16" 1/2" Stainless Steel Strip Coil 310 316 304 410 430 OEM

Our Product Introduction

Basic Information

- Place of Origin: china
- Brand Name: jinshunlai
- Certification: ISO, AISI, ASTM, GB, EN, DIN
- Model Number: 0.1mm-900mm
- Minimum Order Quantity: 1kg
- Price: Contact Us
- Packaging Details: Waterproof Paper, Steel Strip Packed and other Standard Export Seaworthy Package, or customized package
- Delivery Time: 5day
- Payment Terms: L/C, T/T , Western Union
- Supply Ability: 90000ton

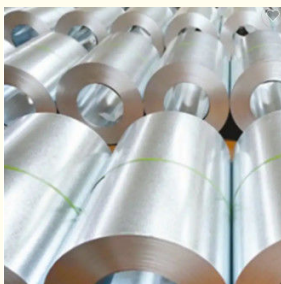


Product Specification

- Application: Construction, Decoration, Industry, Machinery, Etc
- Edge: Slit Edge, Mill Edge
- Grade: 200/300/400 Series
- Length: 1000-6000mm
- Material: Stainless Steel
- Packaging: Standard Export Packing Or As Customer's Request
- Standard: ASTM, AISI, DIN, EN, GB, JIS
- Surface: 2B, BA, HL, No.1, No.4, 8K
- Technique: Cold Rolled, Hot Rolled
- Thickness: 0.1-20mm
- Tolerance: ± 0.02 mm
- Width: 1000-2000mm
- Highlight: **430 stainless steel strip coil,**
1/2" stainless steel strip coil,



More Images



Product Description

PRODUCT DESCRIPTION

410 430 Cold Rolled Stainless Steel Strip for Washing Machine Inner Bucket

430 stainless steel is a general steel with good corrosion resistance. Its thermal conductivity is better than austenite, its thermal expansion coefficient is smaller than austenite, its heat resistance fatigue, and the addition of stabilized element titanium has good mechanical properties at the welding seam.

430 stainless steel for building decoration, fuel burner parts, household appliances, home appliances parts.

Product Description

Stainless steel does not stain, corrode, or rust as easily as regular carbon steel and provides high strength and impact resistance along with the aesthetic appeal. The material also has anti-bacterial qualities and is easy to clean and sanitize.

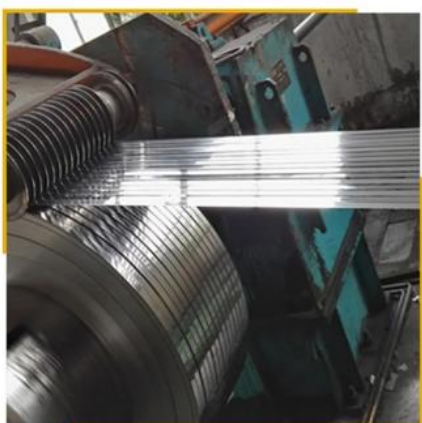
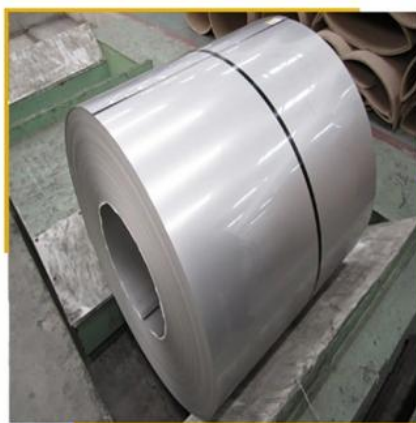
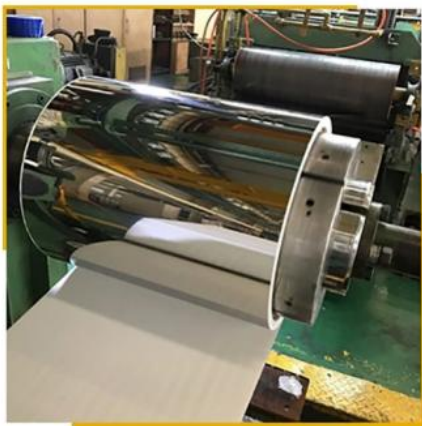
Stainless steel sheet and **stainless steel plate** are both a perfect solution for applications that require a durable metal with anti-oxidation qualities.

We offer **Stainless steel sheet** and **stainless steel plate** with high quality and competitive price. And the material is manufactured by TISCO, BAOSTEEL, POSCO, LISCO and so on. Mainly used in architectural decoration, luxury doors, elevator decoration, metal tank shell, shipbuilding, train interior decoration, and outdoor engineering, advertising nameplates, ceilings and cabinets, aisle panels, screens, tunnel projects, hotels, guesthouses, entertainment venues, kitchens Equipment, light industry, etc.

Standard:	JIS, AISI, ASTM, GB, DIN, EN, JIS, AISI, ASTM, GB, DIN, EN, etc.	Place of Origin:	Jiangsu, China
Brand Name:	ZLYS	Model Number:	201 304
Type:	Welded	Steel Grade:	300 Series
Application:	Industry/Construction	Certification:	ISO, AISI, ASTM, GB, EN, DIN, JIS
Welding Line Type:	ERW	Tolerance:	±1%
Processing Service:	Welding	Grade:	SS 304 SS316l
Product name:	Stainless Steel Sheet	Key Word:	Schedule 10 Stainless Steel Sheet
Surface:	Polished	Price Term:	CIF CFR FOB EX-WORK
MOQ:	1 Ton	Technique:	Hot Rolled , Cold Rolled , Extrusion
Payment:	L/C,T/T	Edge:	Mill Edge Slit Edge
Port:	Qingdao, China		

Specification

ITEM	DESCRIPTION
Product Name	ss coil supplier hot roll coil price 430BA 304BA 201 stainless steel coil
Standard	JIS, AISI, ASTM, GB, DIN, EN, etc.
Certification	ISO, BV, SGS
Material	200 series 300 series 400 series 600 series
Model Number	304,304L,316L,316Ti,309S,310S,321,321H314,2205,S32205,,2507, S32750,600,631800H,825901,903,904L,N08904,,1.4529,N08926,317L , 317LN347H,348H(253MA,S30815),254SMO,S31254,25-6MOS32760440A, 440B,440CGH3030GH3039(C276,HC-276 Hastelloy)724L,725LN
Width	100mm, 500mm, 600mm, 1000mm, 1250mm, 1500mm, 1800mm, 2000mm, or, as required
Thickness	0.2mm-15mm, or as required
Technique	Cold Rolled, hot rolled
Surface Treatment	Polishing, Annealing, Pickling, Bright, or as required
Surface Finished	BA/2B/NO.1/NO.3/NO.4/8K/HL/2D/1D, or as required
Thickness Tolerance	±0.05mm, or as required
Package	Standard export seaworthy package . Water proof paper+Metal pallet+Angle bar protection+Steel belt or as required.
Payment	L/C at sight or 30% TT as deposit and the balance paid against copy of B/L, west union, money gram
Price Term	CIF, CFR, FOB, EX-WORK
Loading Port	Shanghai, Lianyungang, Tianjin, Ningbo,China
Place of Origin	Jiangsu, China
Delivery Time	Prompt delivery 7-15 days after deposit or as order quantity.
MOQ	1 ton , sample or trial order acceptable
Sample	free provided, courier fee by the buyer's side.
Advantages	Showing the splendor of your quality, wear-resistant as well, strong corrosion resistance and decorative effect.
Application	Stainless coil is commonly used in kitchen equipment, furnace parts, heat exchangers and decorative applications, etc
Container Size	20ft GP: 5898mm(Length)x2352mm(Width)x2393mm(High) 40ft GP: 12032mm(Length)x2352mm(Width)x2393mm(High) 40ft HC: 12032mm(Lengh)x2352mm(Width)x2698mm(High)



Product Display

Surface finish	Definition	Application
2B	Those finish, after cold rolling, by heat treatment or other equivalent treatment and lastly by cold rolling to given appropriate luster	Medical equipment, food industry, construction material, kitchen utensils
BA	Medical equipment, food industry, construction material, kitchen utensils	Kitchen utensils, electric equipment, buliding construction
NO.4	Those finished by polishing with NO.180 abrsvivea specified in JIN R6001	Kitchen utensils, buliding construction, medical equipement
HL	Those finished polishing so as to give continuous polishing streaks by using abrasive of suitable grain size	Buliding construction
8K	A mirror like reflective surface by polidhing with finer abrasive over 800 mesh	Reflector, mirror, interior-exterior decoration

Stainless Steel Composition Chart, Percentage (%)

Gra de	C, ≤	Mn, ≤	P, ≤	S, ≤	Si , ≤	Cr	Ni	Mo	N, ≤
304	0.08	2	0. 04 5	0. 03	1	18.0- 20.0	8.0- 11.0	-	-
304 L	0.03	2	0. 04 5	0. 03	1	18.0- 20.0	8.0- 11.0	-	-
316	0.08	2	0. 04 5	0. 03	1	16.0- 18.0	10.0- 14.0	2.00- 3.00	-
316 L	0.03	2	0. 04 5	0. 03	1	16.0- 18.0	10.0- 14.0	2.00- 3.00	-
321	0.08	2	0. 04 5	0. 03	1	17.0- 19.0	9.0- 12.0	-	0.1
201	0.15	5.50- 7.50	0. 06	0. 03	1	16.0- 18.0	3.5- 5.5	-	0.25
301	0.15	2	0. 04 5	0. 03	1	16.0- 18.0	6.0- 8.0	-	0.1
302	0.15	2	0. 04 5	0. 03	0. 7 5	17.0- 19.0	8.0- 10.0	-	0.1
303	0.15	2	0. 2	≥0 .1 5	1	17.0- 19.0	8.0- 10.0	-	-
305	0.12	2	0. 04 5	0. 03	1	17.0- 19.0	11.0- 13.0	-	-
308	0.08	2	0. 04 5	0. 03	1	19.0- 21.0	10.0- 12.0	-	-
309 S	0.08	2	0. 04 5	0. 03	1	22.0- 24.0	12.0- 15.0	-	-
310 S	0.08	2	0. 04 5	0. 03	1. 5	24.0- 26.0	19.0- 22.0	-	-
310 H	0.04- 0.10	2	0. 04 5	0. 03	0. 7 5	24.0- 26.0	19.0- 22.0	-	-
316 Ti	0.08	2	0. 04 5	0. 03	1	16.0- 18.0	10.0- 14.0	2.00- 3.00	0.1
317 L	0.03	2	0. 04 5	0. 03	0. 7 5	18.0- 20.0	11.0- 15.0	3.0- 4.0	0.1
321 H	0.04- 0.10	2	0. 04 5	0. 03	0. 7 5	17.0- 19.0	9.0- 12.0	-	-
347 H	0.04- 0.10	2	0. 04 5	0. 03	0. 7 5	17.0- 19.0	9.0- 13.0	-	-
348 H	0.04- 0.10	2	0. 04 5	0. 03	0. 7 5	17.0- 19.0	9.0- 13.0	-	-
220 5	0.03	2	0. 03	0. 02	1	22.0- 23.0	4.5- 6.5	3.0- 3.5	0.14- 0.20
250 7	0.03	1.2	0. 03 -	0. 02	0. 8	24.0- 26.0	6.0- 8.0	3.0- 5.0	0.24- 0.32

			5						
410	0.08-0.15	1	0.04	0.03	1	11.5-13.5	-	-	-
420	0.15, ≥	1	0.04	0.03	1	12.0-14.0	-	-	-
430	0.12	1	0.04	0.03	1	16.0-18.0	-	-	-
440 A	0.60-0.75	1	0.04	0.03	1	16.0-18.0	-	≤0.75	-
440 B	0.75-0.95	1	0.04	0.03	1	16.0-18.0	-	≤0.75	-
440 C	0.95-1.20	1	0.04	0.03	1	16.0-18.0	-	≤0.75	-
440 F	0.95-1.20	1.25	0.06	0.15	1	16.0-18.0	0.5	-	-
800 H	0.05-0.10	1.5	0.045	0.015	1	19.0-23.0	30.0-35.0	-	-
904 L	0.02	2	0.045	0.035	1	19.0-23.0	23.0-28.0	4.00-5.00	0.1
15-5 PH	0.07	1	0.04	0.03	1	14.0-15.5	3.5-5.5	-	-
17-4 PH	0.07	1	0.04	0.03	1	15.5-17.5	3.0-5.0	-	-
17-7 PH	0.09	1	0.04	0.04	1	16.0-18.0	6.5-7.75	-	-



Wuxi Jinnuo copper Co.,Ltd



+86-17763564398



sales01@shuangheyisteel.com



copper-solid.com

32 Chengnan Road, New District, Wuxi City, Jiangsu Province, China